

IWAN MAKTABI

FLATWEAVE KILIMS

GENERATION THREE

THE EYE OF THE BEHOLDER COLLECTION

Designed by Noor Alsuwaidi

THE EYE OF THE BEHOLDER

The playful collages of shapes and color that intuitively appear within the works are open for interpretation by the eye of the beholder, which inspired the title of this collection. In this series Noor Al Suwaidi asks the viewer to decipher the works, some more obvious than others. The color palette evokes emotions inspired by nature, such as sunsets in the sky or sand and crystals of the earth.



PRODUCT SHEET

THE EYE OF THE BEHOLDER

COLOR

None customizable

SIZE

Customizable

PILE HEIGHT

3mm

MATERIAL

Wool & Silk

TECHNIQUE

Kilim Flatweave mix Tulu

LEAD TIME

3-4months

THE EYE OF THE BEHOLDER COLLECTION

DANCER III



Pink
148x205cm

SUGAR & SPICE II



Grey
148x195cm

DANCER I



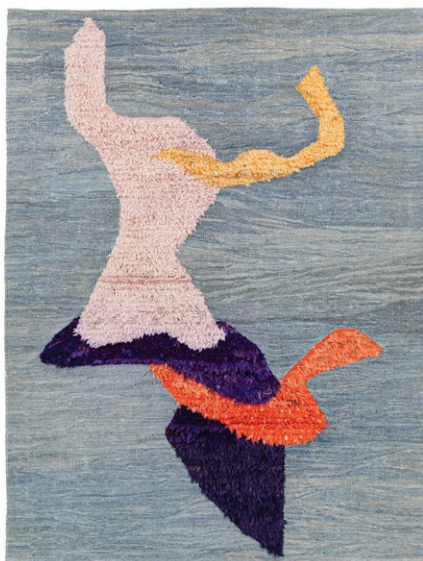
Orange
160x198cm

Sugar & Spice I



Pink
150x200cm

Dancer II



Grey
152x197cm

THE EYE OF THE BEHOLDER COLLECTION

The Party



Grey
302x198cm

Do You See Me II



Grey
150x158cm

Do You See Me III



Dark Green
126x188cm



Emirati artist known for her abstract figurative painting, Alsuwaidi's visual language and masterful use of color distinguishes her practice. Her works have been exhibited in galleries in London, Berlin, Istanbul, Kuwait and Washington DC, as well as across art venues in the UAE

Her works have been placed in prominent collections including Barjeel Art Foundation, Abu Dhabi Music and Art Foundation, and private collections in the UAE and the region. AlSuwaidi has collaborated with the Swiss watchmakers Swatch in celebration of the world's fair Expo 2020 in Dubai.



IWAN MAKTABI

GENERATION THREE

THE EYE OF THE BEHOLDER COLLECTION

instagram . iwanmaktabiofficial

