



**IWAN MAK TABI**

GENERATION THREE

HANDKNOTTED RUGS  
FLATWEAVE KILIMS

**MAI COLLECTION**

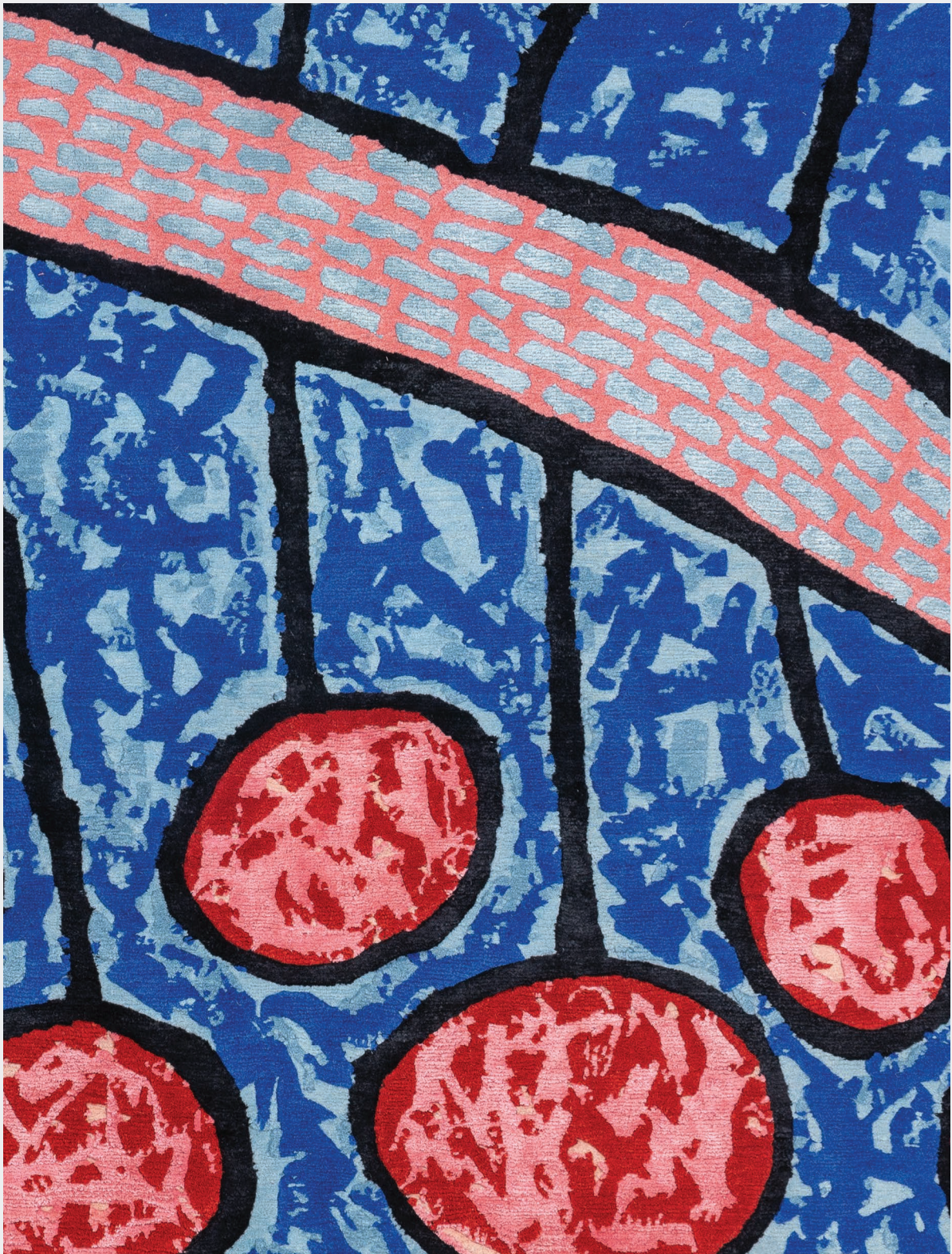
Designed by Mohamed Ahmad Ibrahim



## MAI

Limited Edition/

This collection transforms the meditative mark-making of Emirati artist Mohamed Ahmed Ibrahim into hand-knotted rugs. Inspired by the landscapes of Khorfakkan, these works evoke ancient glyphs—symbols that feel both unearthed and invented. Lines, loops, and organic shapes repeat like a visual chant, tracing memory, language, and time. Each rug becomes a terrain of its own: tactile, abstract, and quietly resonant.



PRODUCT SHEET

MAI

COLOR

None customizable

SIZE

Customizable

PILE HEIGHT

3mm

MATERIAL

Wool & Silk

TECHNIQUE

Handknotted  
Flatweave

LEAD TIME

5-6months  
3-4months

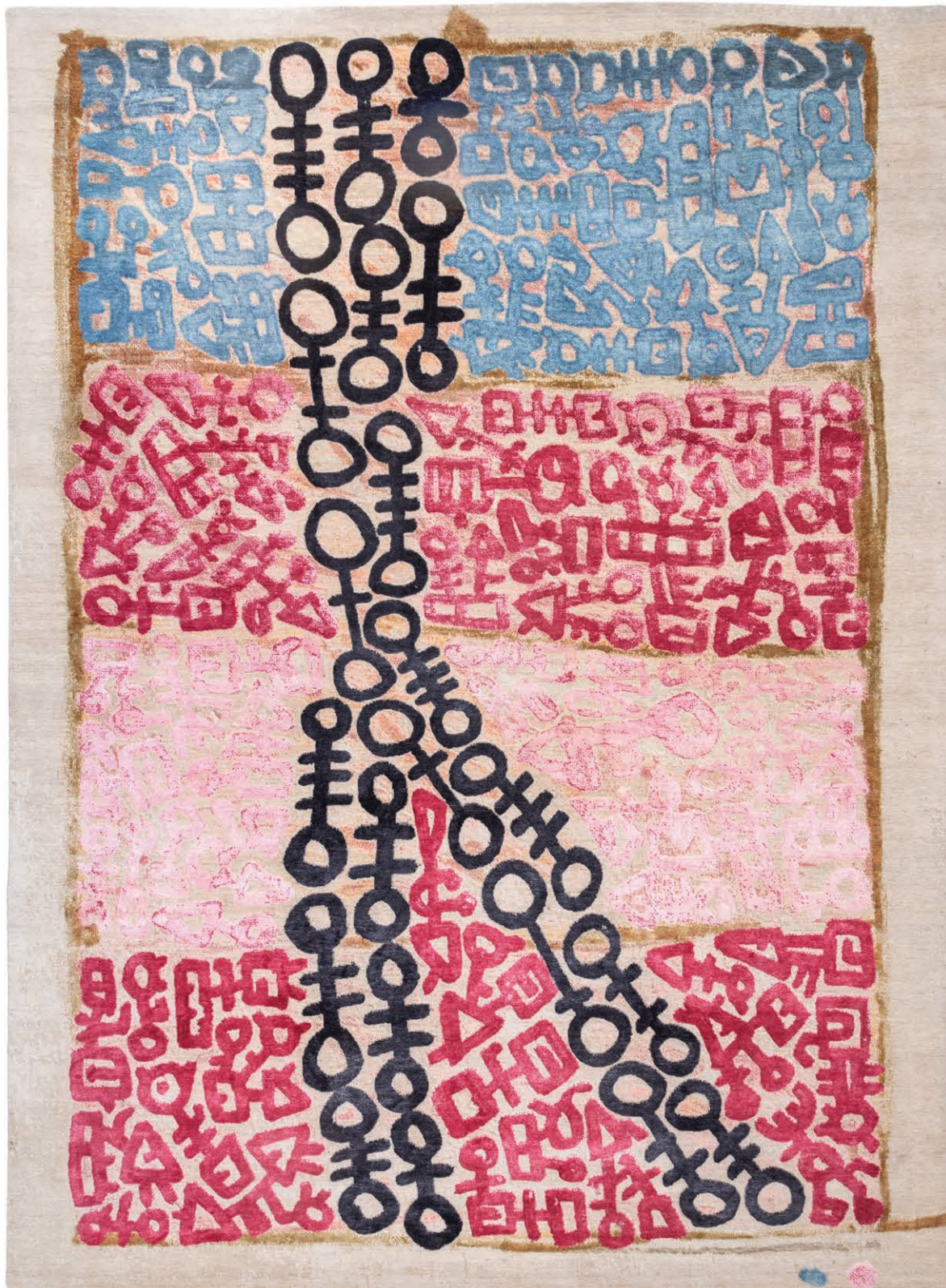


# MAI COLLECTION

---

## HANDKNOTTED

Alphabet Letter Multi



Multi

275x372cm

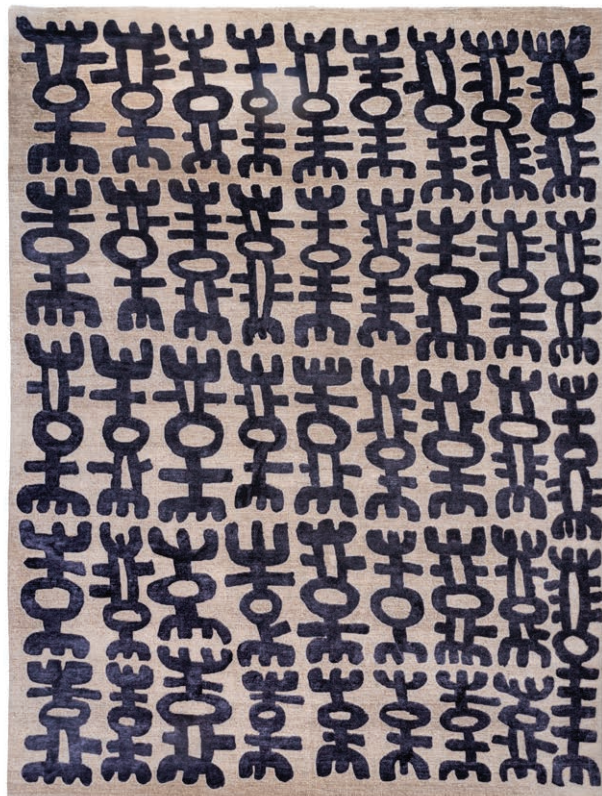


# MAI COLLECTION

---

## HANDKNOTTED

Alphabet Letter B&W



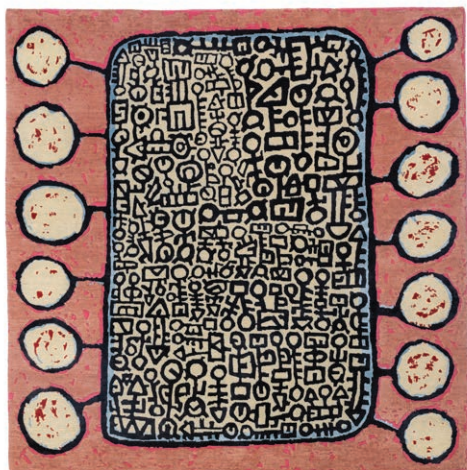
Untitled I



Black/White  
278x371cm

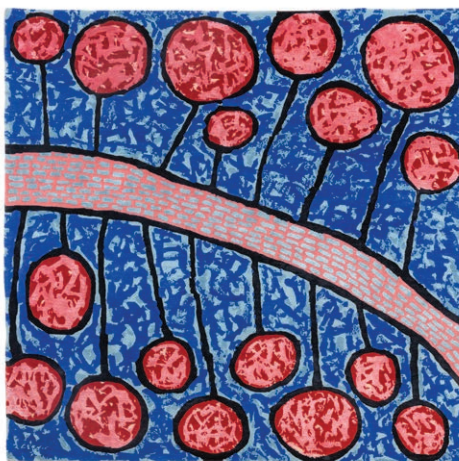
Green/Orange/Red  
216x309cm

Flying Carpet



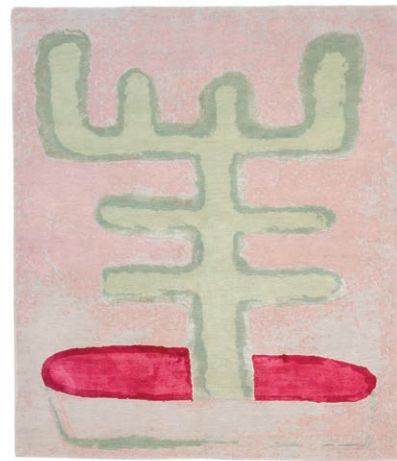
Brique  
181x182cm

Blue Boulevard



Blue/Red  
200x300cm

My Garden



Pink/Green  
153x179cm



# MAI COLLECTION

## HANDKNOTTED

---

Boulevard Green



Green  
123x183cm

Boulevard Yellow



Yellow  
126x183cm

Boulevard Dark Green



Dark Green  
124x188cm

Vase Yellow



Yellow  
122x185cm

Alphabet Letter Dark Green



Dark Green  
126x188cm

Alphabet Letter Light Green



Light Green  
124x188cm



# MOHAMED AHMED IBRAHIM COLLECTION

---

## FLATWEAVE

Untitled VI



Yellow  
203x298cm

Untitled VII



Green  
207x300cm



# MOHAMED AHMED IBRAHIM COLLECTION

## FLATWEAVE

Untitled II



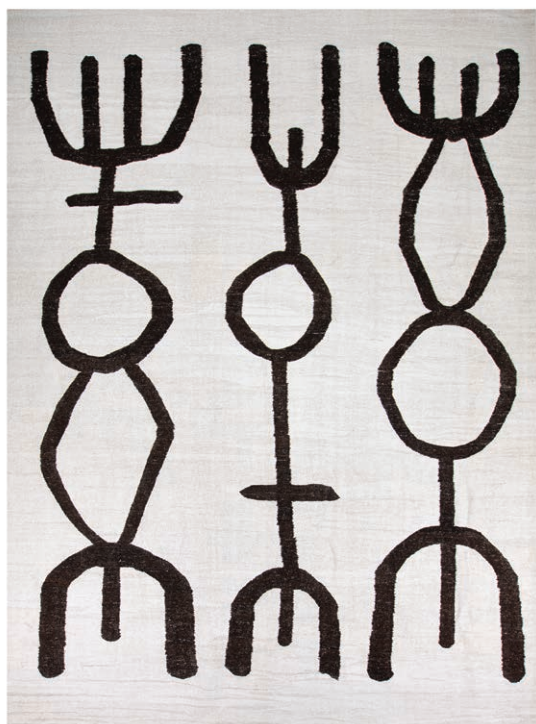
Blue  
154x196cm

Untitled III



Orange  
152x203cm

Untitled B/W



Black/White  
296x394cm

Untitled IV



Light Blue  
154x196cm



# MOHAMED AHMED IBRAHIM COLLECTION

---

## FLATWEAVE

Runner I



Orange/Yellow  
78x185cm

Runner II



Yellow/Orange  
74x186cm





Emirati artist Mohamed Ahmed Ibrahim is part of the UAE's first generation of contemporary artists from the late 1980s, an avant-garde scene that included Hassan Sharif, Abdullah Al Saadi, Hussein Sharif, and Mohammed Kazem. Ibrahim's work has been inspired by a lifelong relationship with the environment of Khorfakkan, his place of birth, with the Gulf of Oman on one side and the Hajar Mountains on the other. This deep connection to his local environment repeats itself throughout his studio practice, whether through his installations, drawings or objects, and the materials he has worked with for over three decades. His hand made objects are shaped like primitive tools, bones or parts of trees and appear to have been unearthed from some ancient den, rather than handcrafted. His works on paper reveal his own form of language - inscriptions, lines and abstract forms that are reminiscent of ancient cave drawings - marking time and memory through meditative repetition.





**IWAN MAKTABI**

GENERATION THREE

**MOHAMED AHMED IBRAHIM COLLECTION**

instagram . iwanmaktabiofficial

